

**ARCHITECTURE AND DESIGN**

**PORTFOLIO**

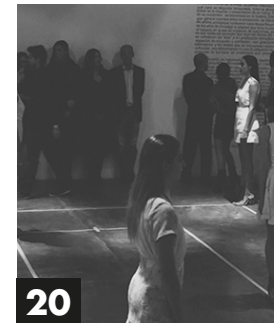
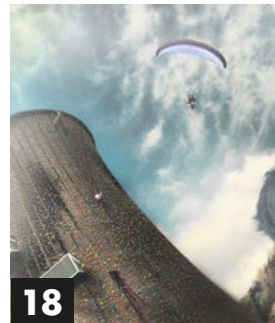
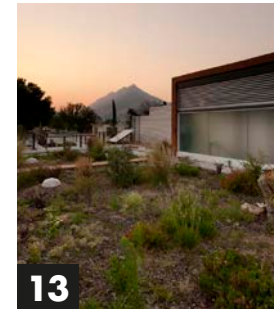
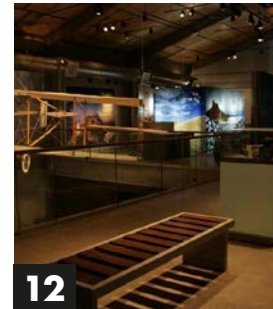
---

**Ignacio Cárdenas**

**Feb. 2018**

# PROJECTS

2008-2017



1\_The Avenues Riyadh

8\_Bluewaters Dubai Island

15\_APEC Hospital

2\_Dubai Hills Mall

9\_Skypitic Tower

16\_Reflexions

3\_Qatar Tennis Club

10\_TSP Tower

17\_Cal Pons Community Project

4\_PA21

11\_ÄNA Tower

18\_La Baells Community Project

5\_Souk Medinat

12\_MUSOR

19\_RG House

6\_JEC Waterbody

13\_Bioconstruccion HQ

20\_Maria Vogel Fashion Runway

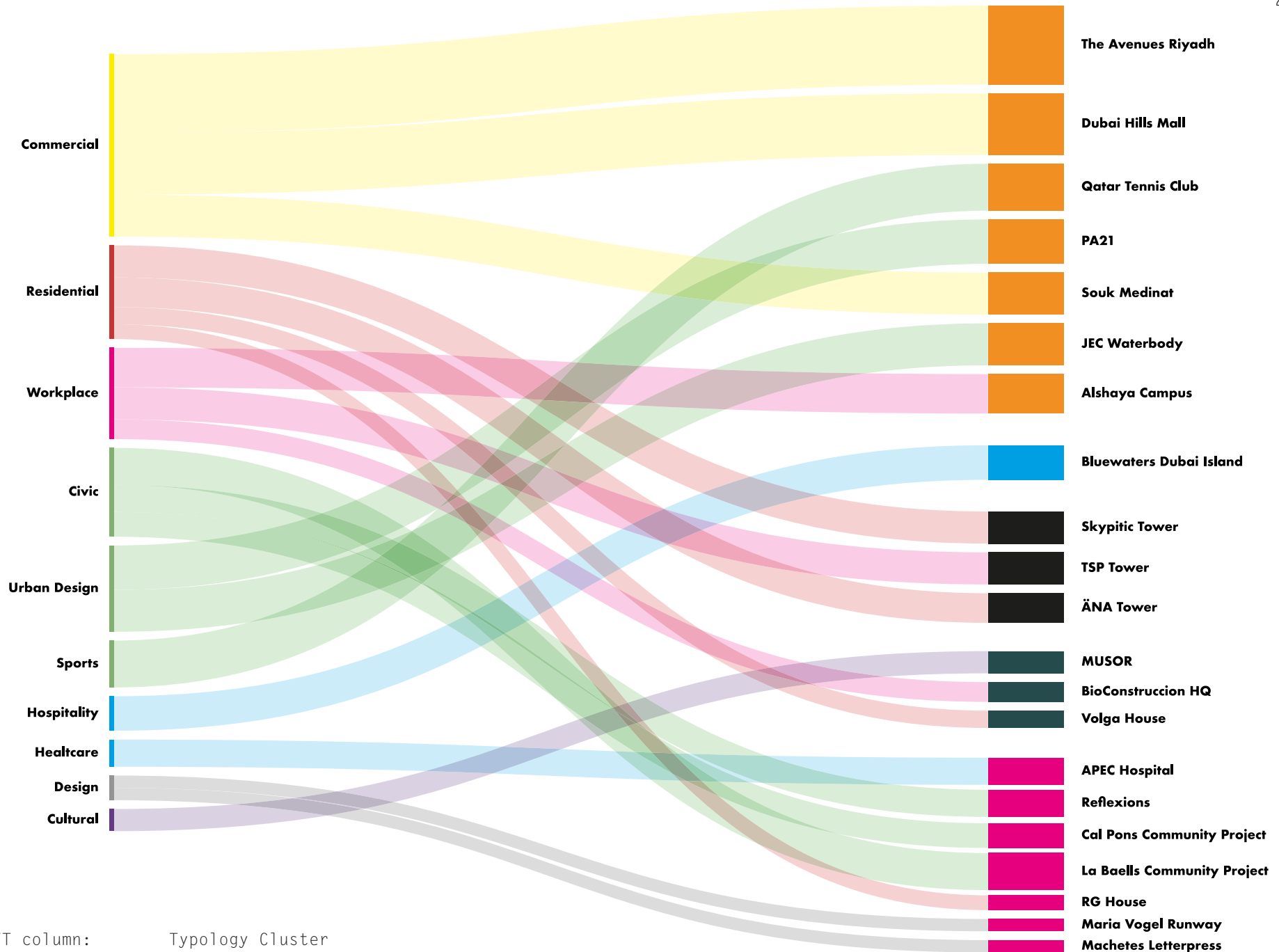
7\_Alshaya Campus

14\_Volga House

21\_Machetes Letterpress

# PROJECTS BY TYPOLOGY

2008-2017



## LEGEND.

On the LEFT column:

On the RIGHT column:

Branch size:

Color Code by Office:

Typology Cluster

Project Name

RELATIVE project Scale

CRTKL ATKINS RDLP ODA PERSONAL/LACRA

**SELECTED**

---

**PROJECTS**

---



# ALC

Collaboration and Work for CRTKL.UAE

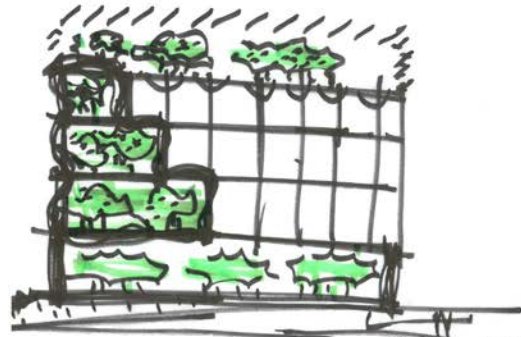
**Client:**  
M.H. Alshaya Co.  
**Name:**  
Alshaya Campus  
**Typology:**  
Mixed Use (Workplace/Retail/Civic)  
**Location:**  
Dubai, UAE  
**Year:**  
2017  
**Status:**  
Under Development for Construction  
**Consultants:**  
-

**Professional contributions:**  
Project Architect /  
Design Leader from Pre-concept to  
Schematic Design.





ALSHAYA  
EXPO 2020



INTERIOR  
VIEW

## ALSHAYA CAMPUS - DUBAI, UAE

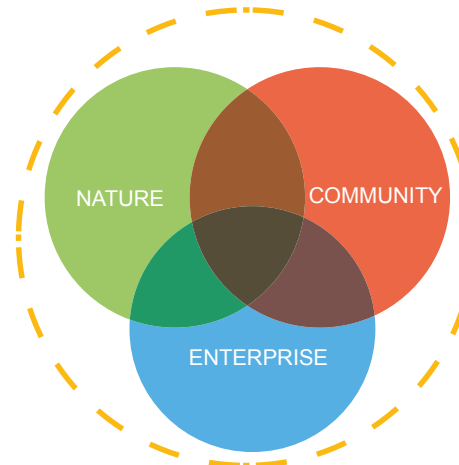
DESCRIPTION / CONCEPT

### Project Involvement:

- Design Leader (3 pl. Team)
- Research Leader
- Brief development
- Concept development
- Presentation and Storytelling
- Sketch-up model development
- Revit model development and management
- Team organization and schedule
- Schematic development
- Consultants Bid development
- Consultant review and appointment

### Skills applied:

- Concept Sketch
- Adobe InDesign
- Microsoft Excel
- Microsoft Project
- Adobe Photoshop
- Adobe Illustrator
- Autodesk Revit
- Sketch-up



**87%**  
Think comfort is the most important thing in an office

**85%**  
Think lighting is the most important factor for comfortability

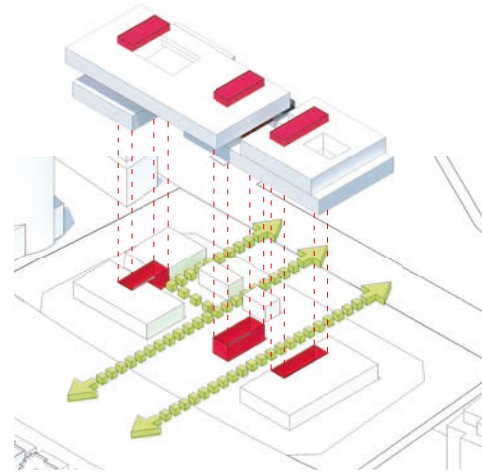
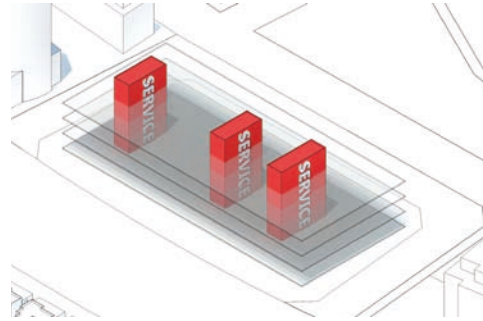
Diverse amenities increase retention by 33%

There are now five generations in today's workforce

Top performers select their own space	Indoor green spaces Increase 6% More productive 15% More creative 15% Well being
Less crowded spaces are more productive	
More time in the office = Less productive	Open plan gets more people sick
Open space preference. 2014 41% 2016 69%	71% Need quiet Areas to work
Work from home preference. 2014 45% 2016 28%	50% Need collaboration Areas

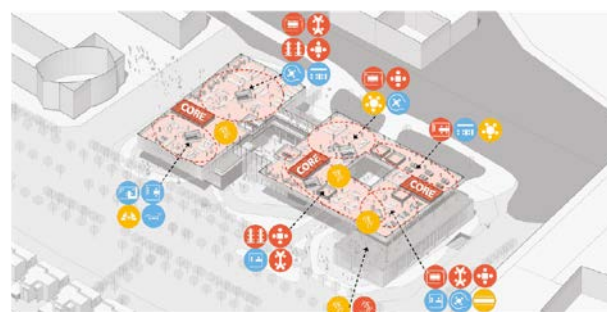
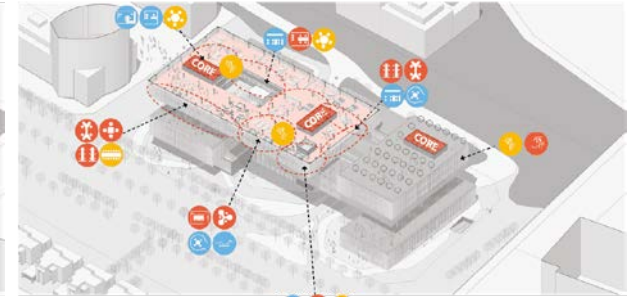
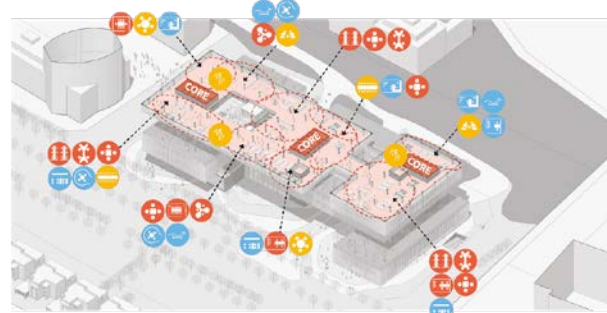
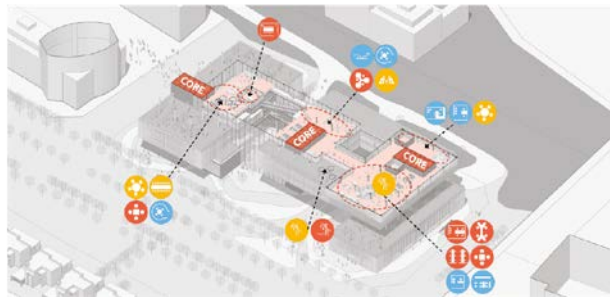
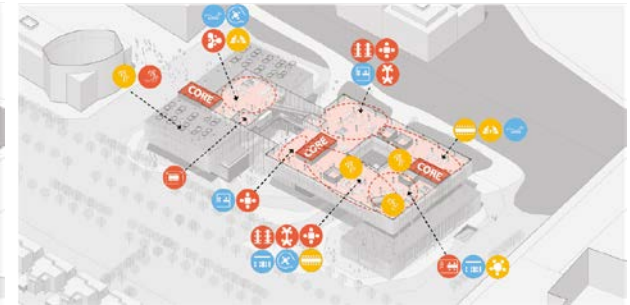
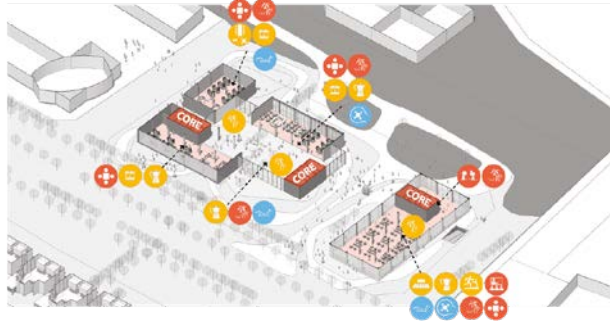
**EMPLOYEE ABSENCES CAN BE DIRECTLY ATTRIBUTED TO LACK OF VIEWS TO THE OUTDOORS**





# ALSHAYA CAMPUS - DUBAI, UAE

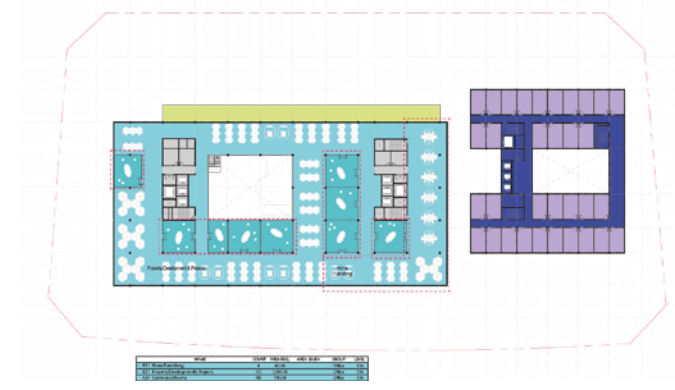
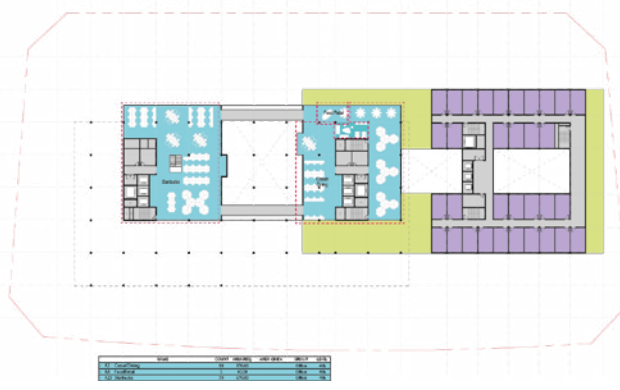
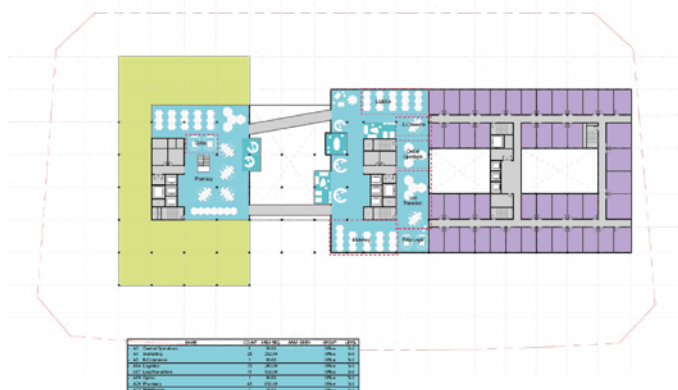
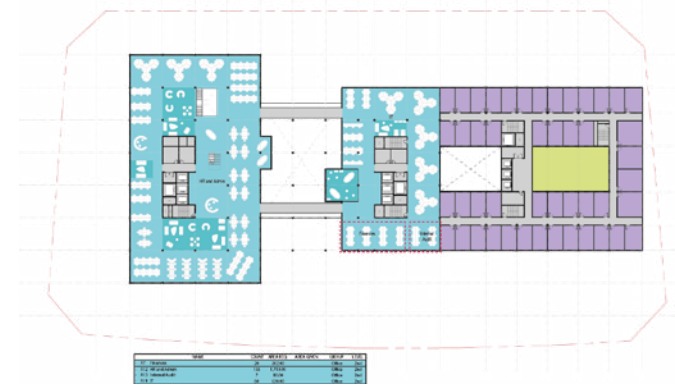
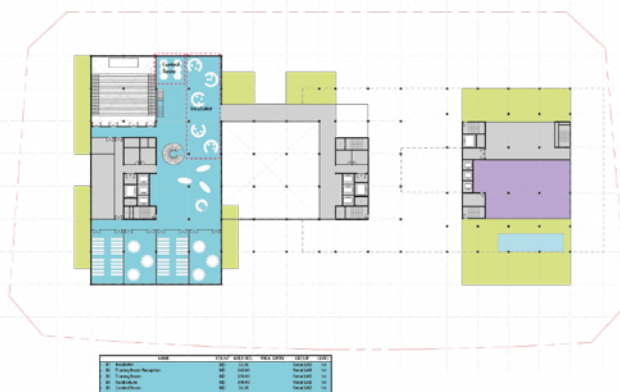
IDEAS / CONCEPT / INTENTIONS





# ALSHAYA CAMPUS - DUBAI, UAE

## DRAWINGS









# **B D I**

Collaboration and Work for ATKINS.UAE

**Client:**  
MERAAS /  
Mirage, Leisure and Development  
**Name:**

Bluewaters Dubai Island

**Typology:**  
Hospitality

**Location:**  
Dubai, UAE

**Year:**  
2014 - 2015

**Status:**  
Under Construction

**Consultants:**  
-

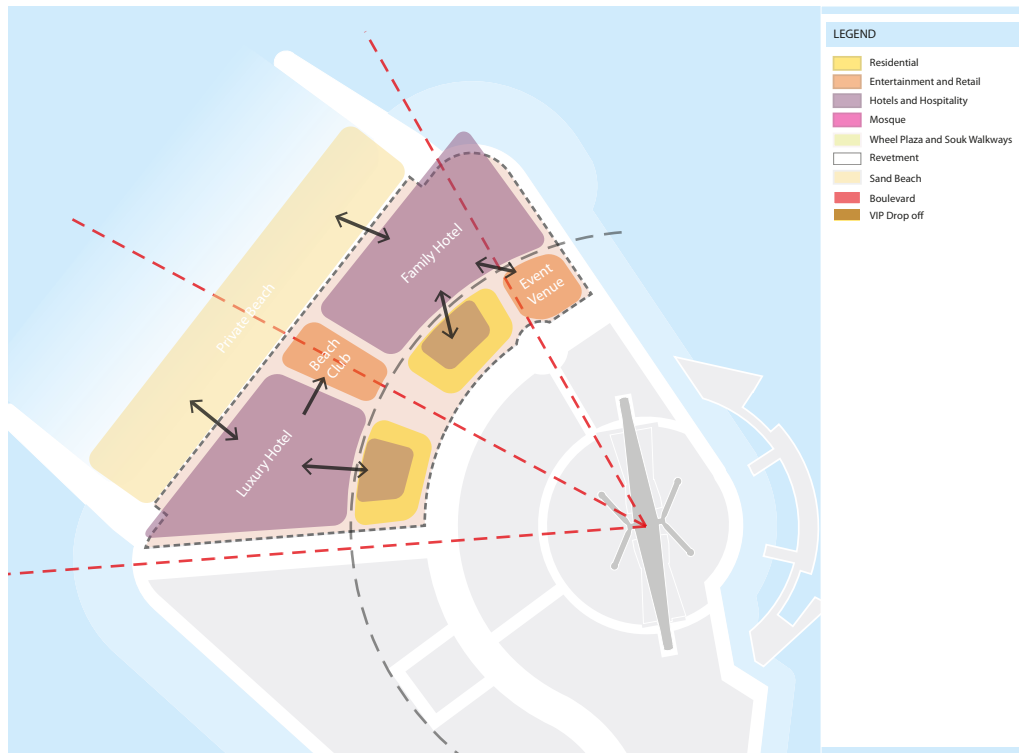
**Professional contributions:**  
Design Architect, part of the team  
working on Concept, Schematic and  
Detail Design stages  
Project Architect for Service  
Apartments, the Beach Club and the  
Conference Centre.





# BLUEWATERS DUBAI ISLAND - DUBAI, UAE

## DESCRIPTION / MASTER PLAN

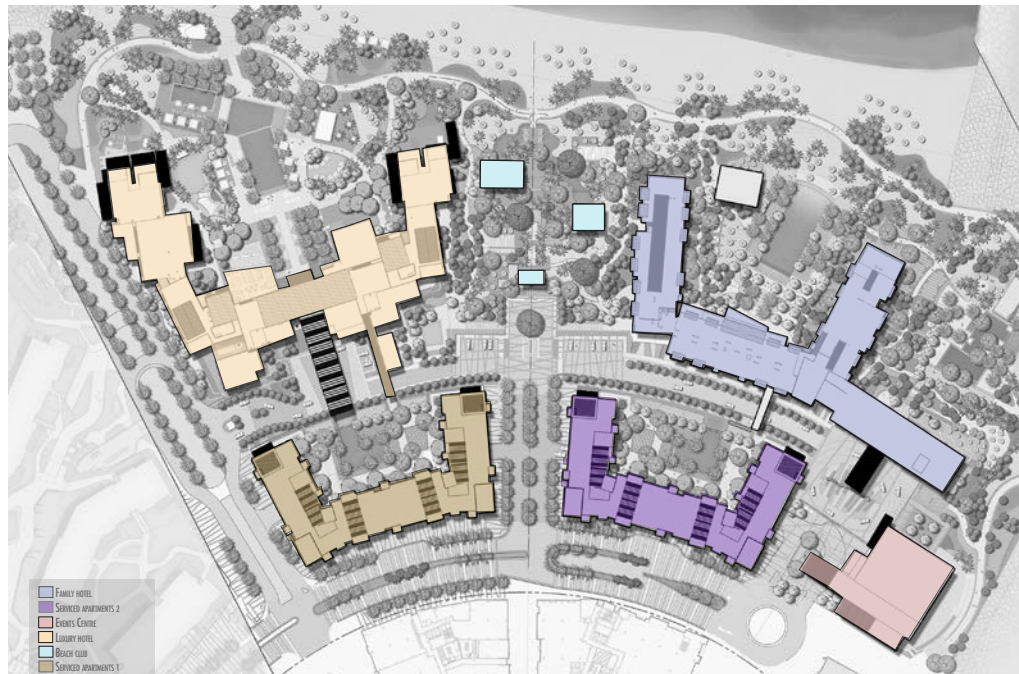


### Project Involvement:

- Part of the Design Team (10 pl.)
- Architectural Concept
- Presentation and Storytelling
- Sketch-up model development
- Revit model development and management
- Schematic development
- Design Development
- Construction Documents
- Coordinate Consultants
- Attend Client Meetings
- Project Leader for Service Apartments, the Conference Centre and the Beach Club

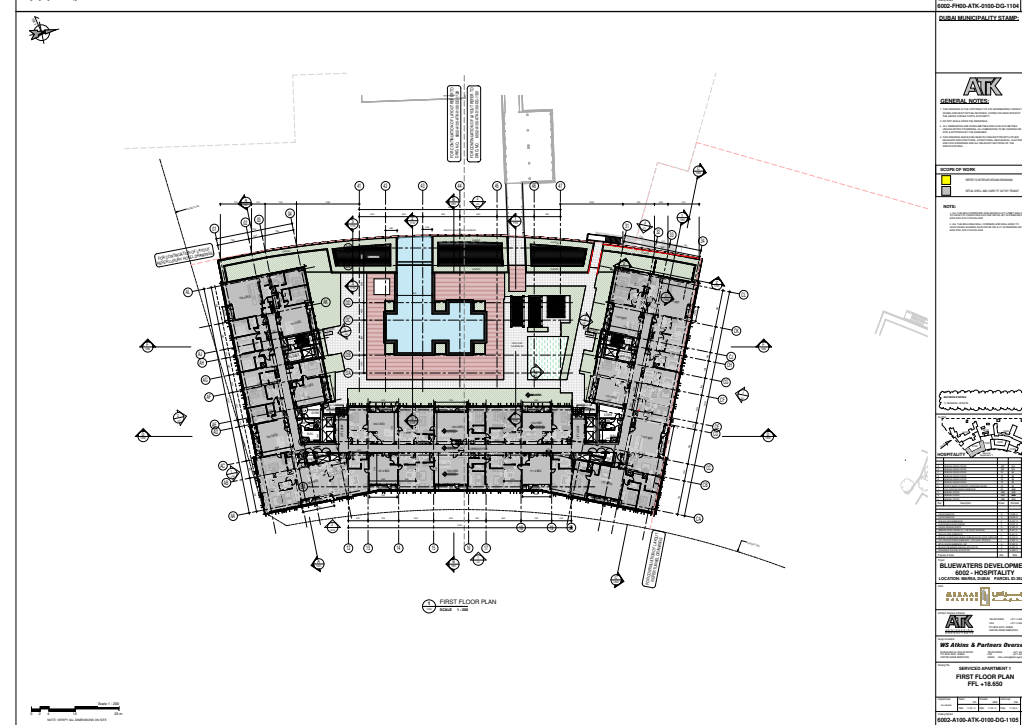
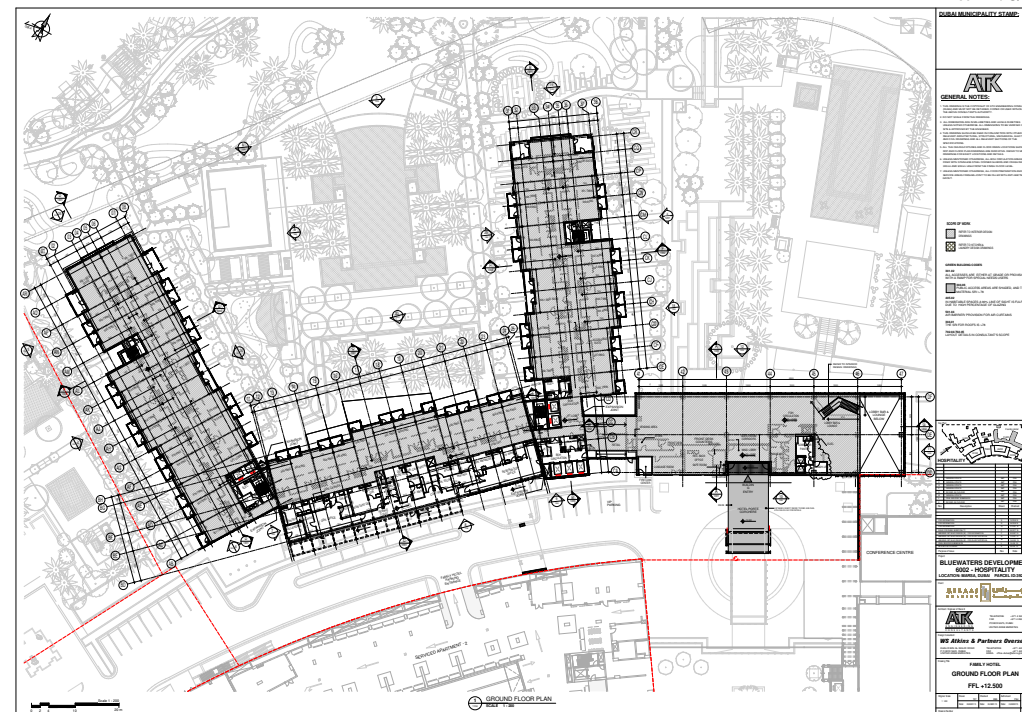
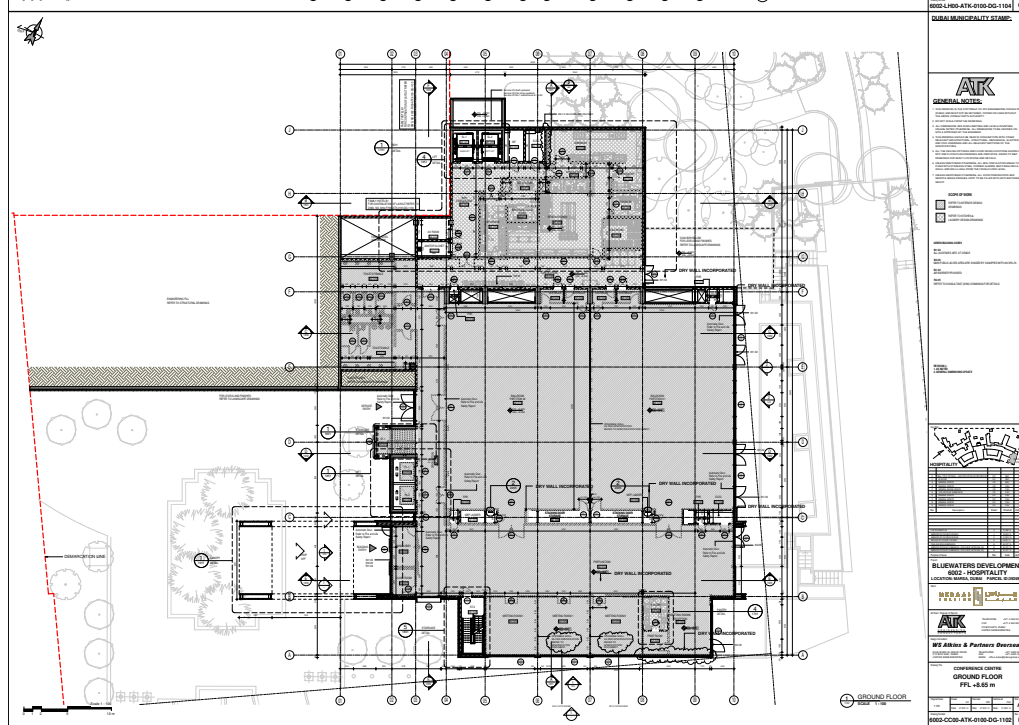
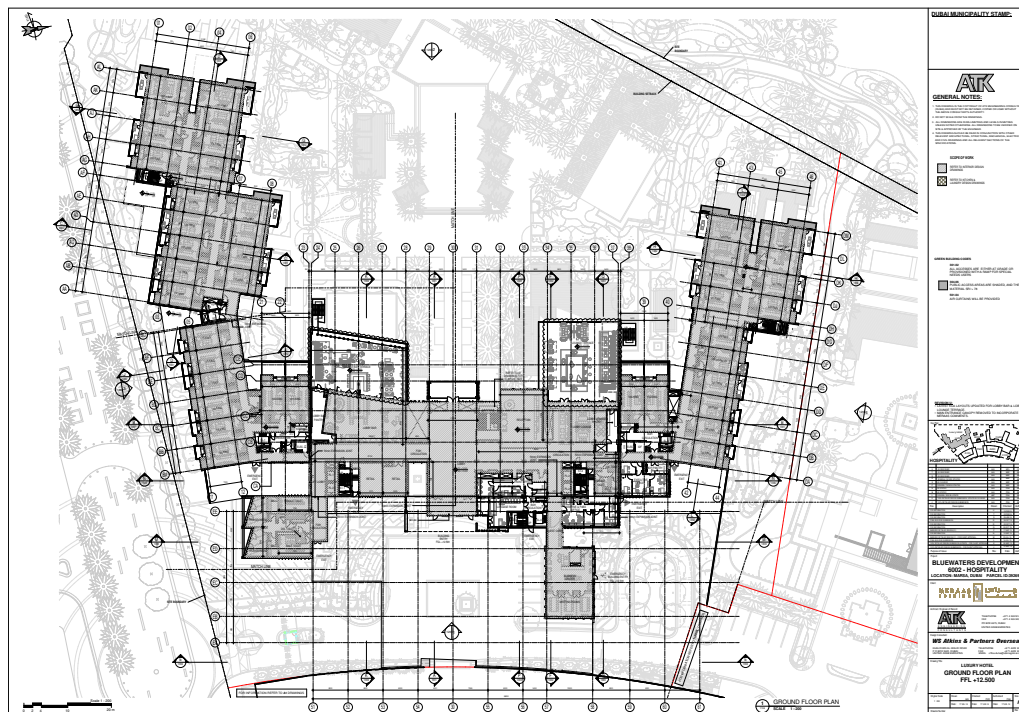
### Skills applied:

- Concept Sketch
- Adobe InDesign
- Microsoft Excel
- Adobe Photoshop
- Adobe InDesign
- Autodesk Revit
- Sketch-up
- McNeel Rhino

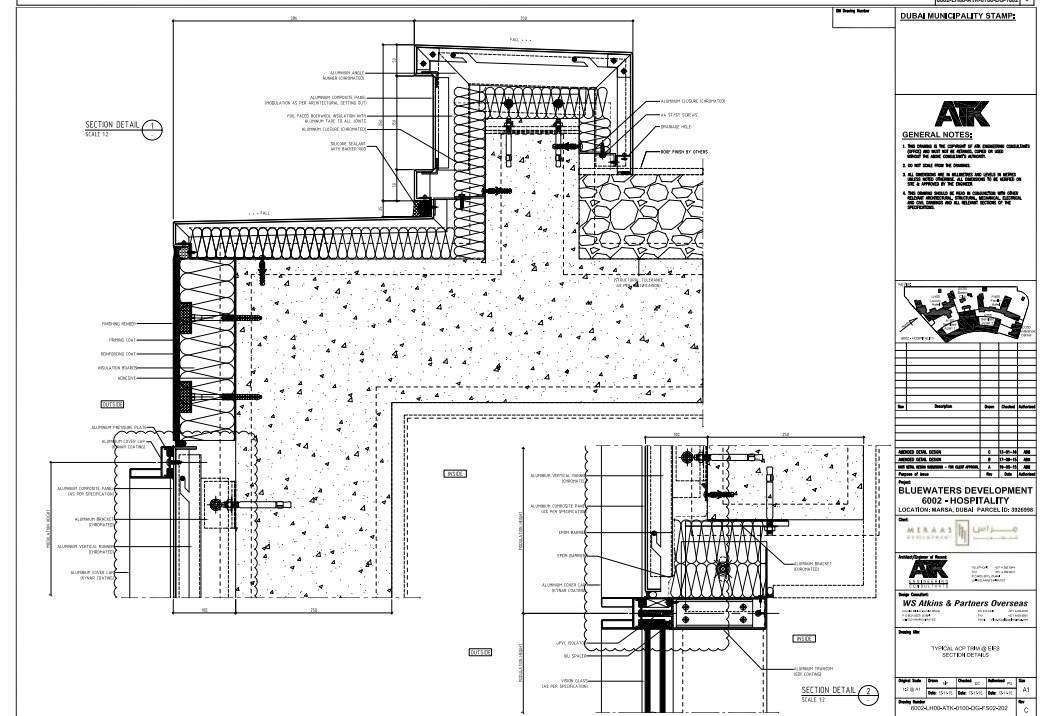
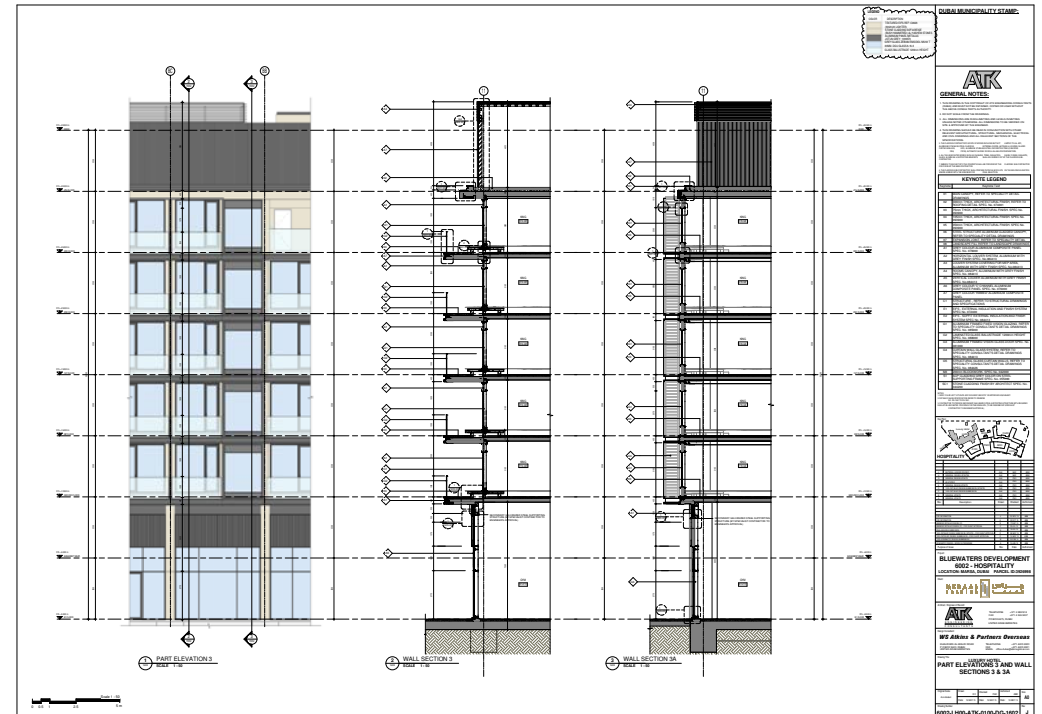
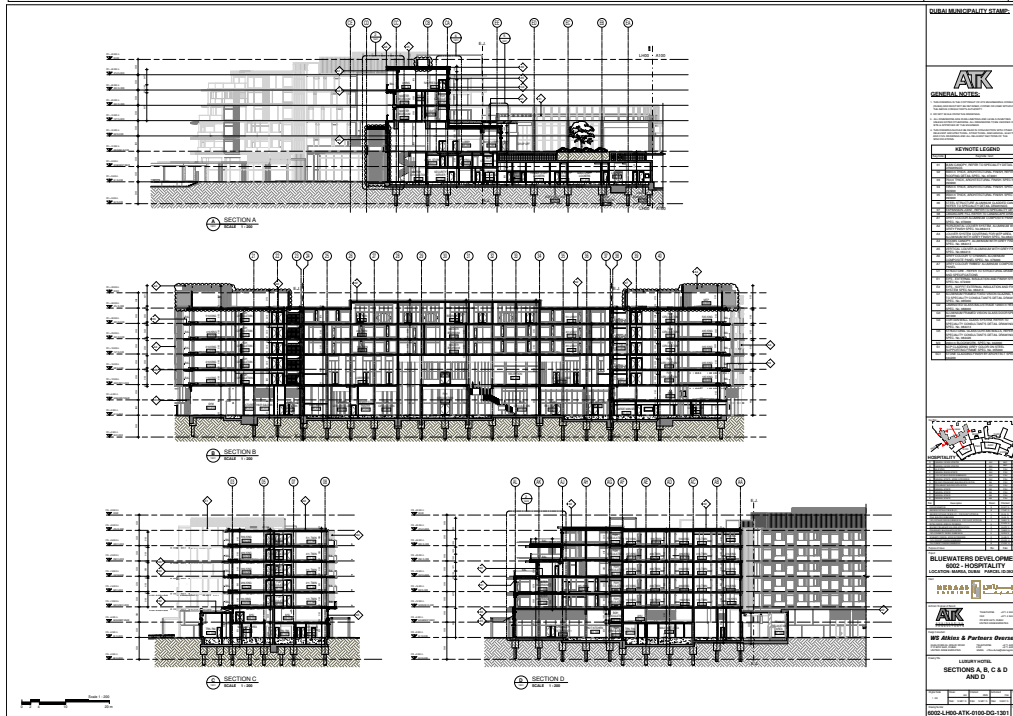
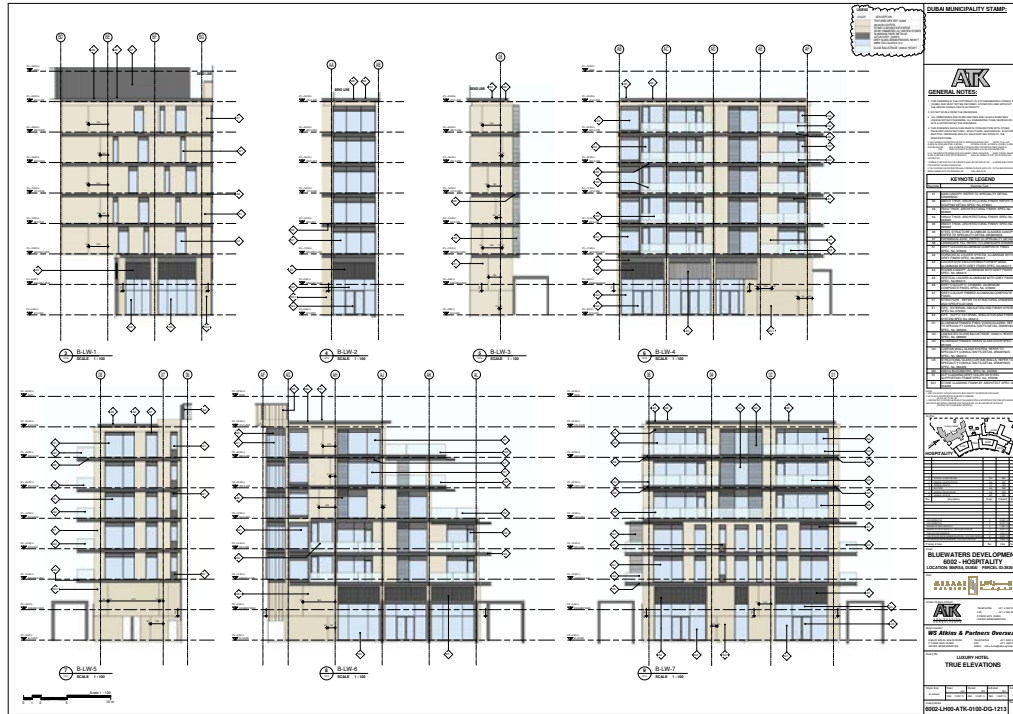




**BLUEWATERS DUBAI ISLAND - DUBAI, UAE**  
DRAWINGS



**BLUEWATERS DUBAI ISLAND - DUBAI, UAE**  
DRAWINGS







## BLUEWATERS DUBAI ISLAND - DUBAI, UAE ARCHITECTURE





# JEC

Collaboration and Work for CRTKL.UAE

**Client:**  
Jeddah Economic Company

**Name:**  
Jeddah Economic City

**Typology:**  
Urban Planning & Mixed Use  
(Retail/Civic/Hospitality)

**Location:**  
Jeddah, KSA

**Year:**  
2016-2017

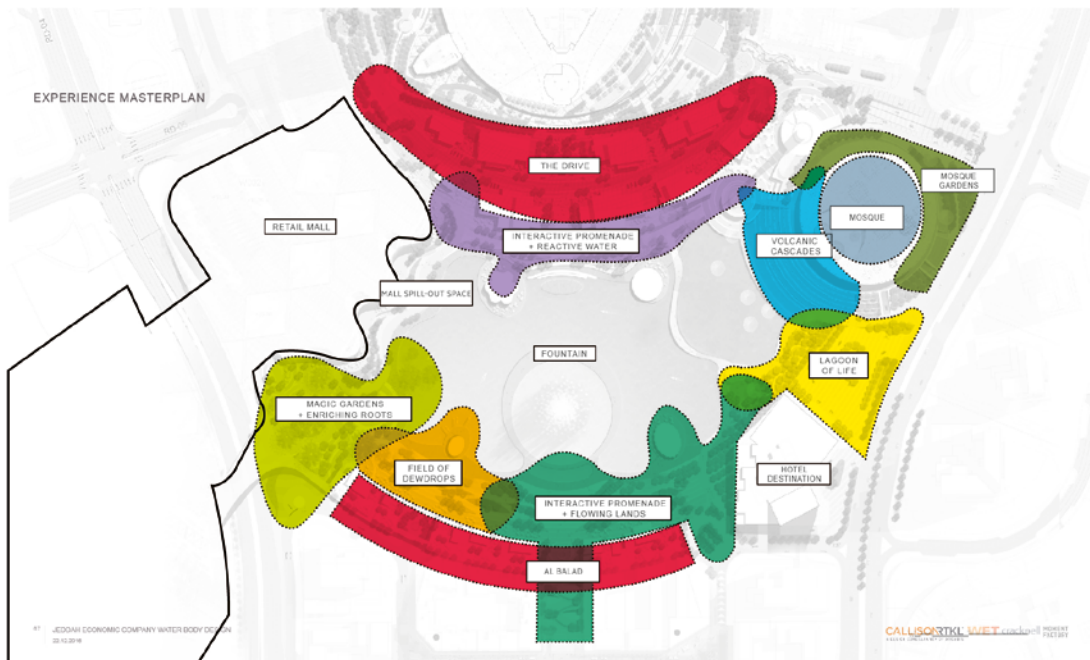
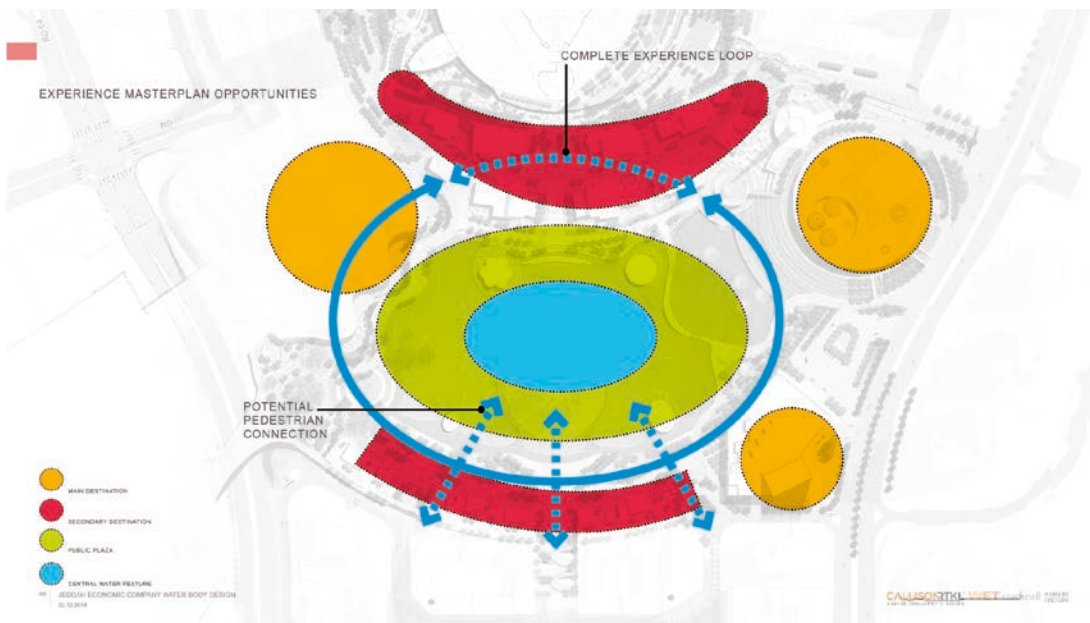
**Status:**  
Under Construction

**Consultants:**  
-

**Professional contributions:**  
Design Architect /  
Design Leader from Pre-concept to  
Schematic Design







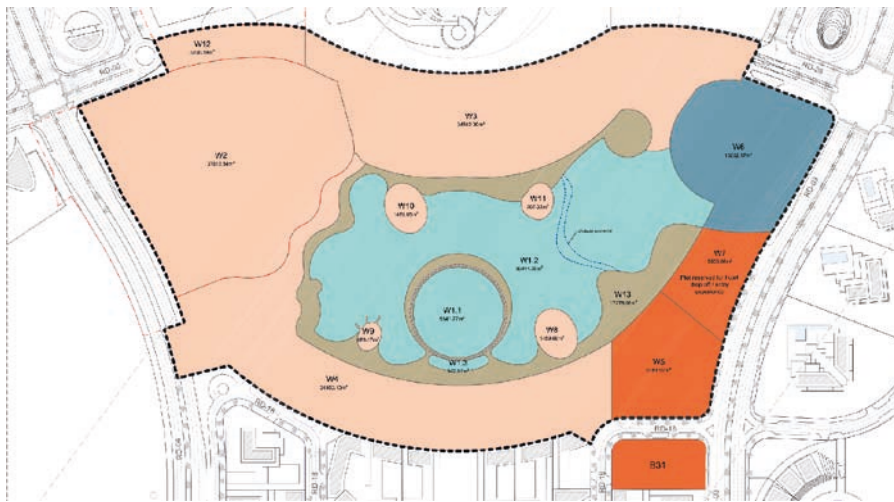
<h1>1.2</h1> <h2>ENRICHING ROOTS</h2>	<h3>TECHNICAL VISUALISATION</h3> <p>CLUSTERS OF VERTICAL POLES WITH INTEGRATED LED LIGHTING</p> <p>INTERACTIVITY</p>
<h4>LIGHTING</h4> <p>LED JOE LIGHTS, SHOWN AS A SOLID VERTICAL POLE, OVERHEADS OF A BUS FROM THE CITY'S PUBLIC ARTISTS TO VISIT FROM THE CITY.</p>	<h4>INSPIRATION</h4>
<h4>SCENOGRAPHIC ELEMENTS</h4> <p>CLUSTERS OF VERTICAL POLES MADE OF BUS STOP NUMBER AND ARTISTS' NAMES, WITH LED LIGHTS AND A BUS STOP EFFECTS AND A BUS STOP EFFECTS.</p>	<h4>INSPIRATION</h4>
<h4>INTERACTIVITY</h4> <p>THE PROJECTS ARE INTERACTIVE, WITH A BUS STOP EFFECTS AND A BUS STOP EFFECTS.</p>	<h4>INSPIRATION</h4>
<h4>SOUND</h4> <p>SPEAKERS ARE INSTALLED IN THE VERTICAL POLES TO CREATE A SOUND EFFECTS AND A BUS STOP EFFECTS.</p>	<h4>INSPIRATION</h4>
<h4>KEYPLAN</h4>	<h4>INSPIRATION</h4>

[illegible]



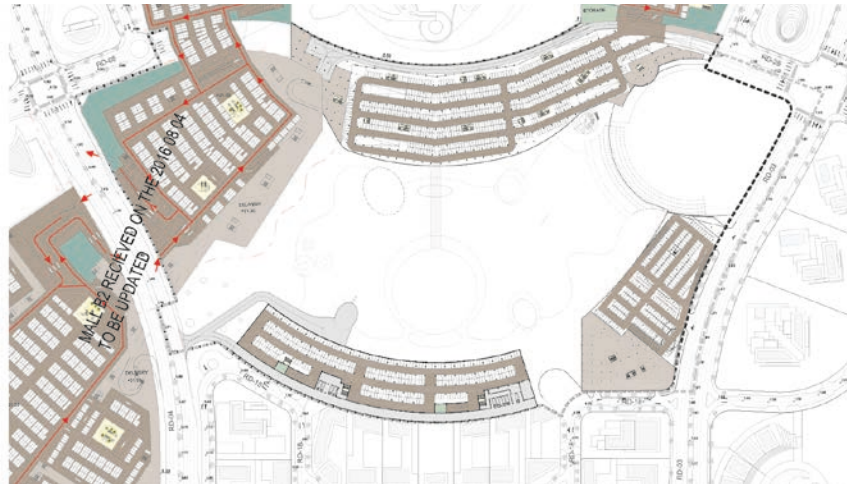
# JEC WATERBODY - JEDDAH, KSA

## DRAWINGS

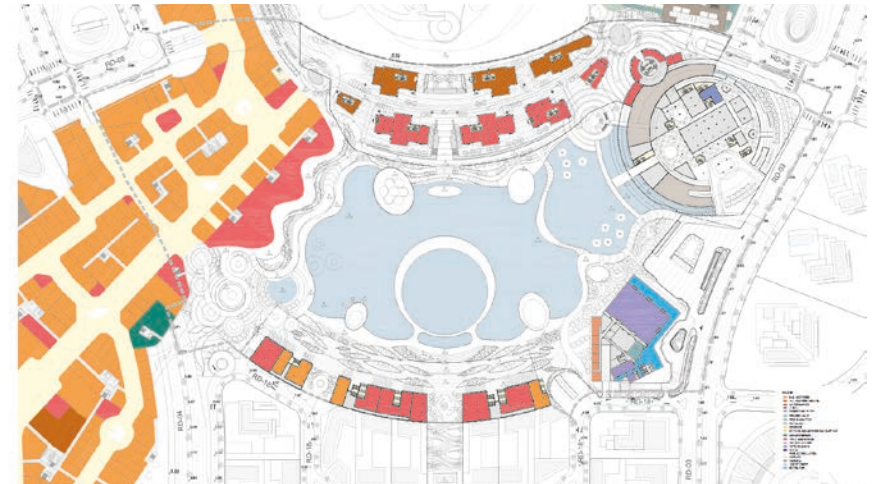


JEC WATERBODY DISTRICT													
PLOT NO.	PLOT AREA (SQ. M)	LAND USE		FAR CALCULATIONS		GFA BREAKDOWN				PARKING & SERVICES			
		Max. Use	Sub. Use	FAR	Total GFA (SQ. M)	Hotel / Retail (SQ. M)	Hotel / Office (SQ. M)	Hotel / Residential (SQ. M)	Hotel / Public Facility (SQ. M)	Hotel / Public Facility (SQ. M)	Hotel / Public Facility (SQ. M)	Hotel / Public Facility (SQ. M)	Hotel / Public Facility (SQ. M)
W1	5,547	WATER	WATER CANALS	0.00	0	0	0	0	0	0	0	0	0
W2	25,015	WATER	WATER CANALS	0.00	0	0	0	0	0	0	0	0	0
W3	5,513	WATER	WATER CANALS	0.00	0	0	0	0	0	0	0	0	0
W4	18,144	COMMERCIAL	RETAIL	0.24	4,350	0	0	0	0	0	0	0	0
W5	11,013	COMMERCIAL	RETAIL	0.24	4,350	0	0	0	0	0	0	0	0
W6	8,163	COMMERCIAL	RETAIL	0.24	4,350	0	0	0	0	0	0	0	0
W7	8,099	COMMERCIAL	RETAIL	0.24	4,350	0	0	0	0	0	0	0	0
W8	15,147	COMMERCIAL	RETAIL	0.24	4,350	0	0	0	0	0	0	0	0
W9	3,509	COMMERCIAL	RETAIL	0.24	4,350	0	0	0	0	0	0	0	0
W10	1,405	COMMERCIAL	RETAIL	0.24	4,350	0	0	0	0	0	0	0	0
W11	486	COMMERCIAL	RETAIL	0.24	4,350	0	0	0	0	0	0	0	0
W12	1,405	COMMERCIAL	RETAIL	0.24	4,350	0	0	0	0	0	0	0	0
W13	1,405	COMMERCIAL	RETAIL	0.24	4,350	0	0	0	0	0	0	0	0
W14	1,405	COMMERCIAL	RETAIL	0.24	4,350	0	0	0	0	0	0	0	0
W15	1,405	COMMERCIAL	RETAIL	0.24	4,350	0	0	0	0	0	0	0	0
W16	1,405	COMMERCIAL	RETAIL	0.24	4,350	0	0	0	0	0	0	0	0
W17	1,405	COMMERCIAL	RETAIL	0.24	4,350	0	0	0	0	0	0	0	0
W18	1,405	COMMERCIAL	RETAIL	0.24	4,350	0	0	0	0	0	0	0	0
W19	1,405	COMMERCIAL	RETAIL	0.24	4,350	0	0	0	0	0	0	0	0
W20	1,405	COMMERCIAL	RETAIL	0.24	4,350	0	0	0	0	0	0	0	0
W21	1,405	COMMERCIAL	RETAIL	0.24	4,350	0	0	0	0	0	0	0	0
W22	1,405	COMMERCIAL	RETAIL	0.24	4,350	0	0	0	0	0	0	0	0
W23	1,405	COMMERCIAL	RETAIL	0.24	4,350	0	0	0	0	0	0	0	0
W24	1,405	COMMERCIAL	RETAIL	0.24	4,350	0	0	0	0	0	0	0	0
W25	1,405	COMMERCIAL	RETAIL	0.24	4,350	0	0	0	0	0	0	0	0
W26	1,405	COMMERCIAL	RETAIL	0.24	4,350	0	0	0	0	0	0	0	0
W27	1,405	COMMERCIAL	RETAIL	0.24	4,350	0	0	0	0	0	0	0	0
W28	1,405	COMMERCIAL	RETAIL	0.24	4,350	0	0	0	0	0	0	0	0
W29	1,405	COMMERCIAL	RETAIL	0.24	4,350	0	0	0	0	0	0	0	0
W30	1,405	COMMERCIAL	RETAIL	0.24	4,350	0	0	0	0	0	0	0	0
W31	1,405	COMMERCIAL	RETAIL	0.24	4,350	0	0	0	0	0	0	0	0
W32	1,405	COMMERCIAL	RETAIL	0.24	4,350	0	0	0	0	0	0	0	0
W33	1,405	COMMERCIAL	RETAIL	0.24	4,350	0	0	0	0	0	0	0	0
W34	1,405	COMMERCIAL	RETAIL	0.24	4,350	0	0	0	0	0	0	0	0
W35	1,405	COMMERCIAL	RETAIL	0.24	4,350	0	0	0	0	0	0	0	0
W36	1,405	COMMERCIAL	RETAIL	0.24	4,350	0	0	0	0	0	0	0	0
W37	1,405	COMMERCIAL	RETAIL	0.24	4,350	0	0	0	0	0	0	0	0
W38	1,405	COMMERCIAL	RETAIL	0.24	4,350	0	0	0	0	0	0	0	0
W39	1,405	COMMERCIAL	RETAIL	0.24	4,350	0	0	0	0	0	0	0	0
W40	1,405	COMMERCIAL	RETAIL	0.24	4,350	0	0	0	0	0	0	0	0
W41	1,405	COMMERCIAL	RETAIL	0.24	4,350	0	0	0	0	0	0	0	0
W42	1,405	COMMERCIAL	RETAIL	0.24	4,350	0	0	0	0	0	0	0	0
W43	1,405	COMMERCIAL	RETAIL	0.24	4,350	0	0	0	0	0	0	0	0
W44	1,405	COMMERCIAL	RETAIL	0.24	4,350	0	0	0	0	0	0	0	0
W45	1,405	COMMERCIAL	RETAIL	0.24	4,350	0	0	0	0	0	0	0	0
W46	1,405	COMMERCIAL	RETAIL	0.24	4,350	0	0	0	0	0	0	0	0
W47	1,405	COMMERCIAL	RETAIL	0.24	4,350	0	0	0	0	0	0	0	0
W48	1,405	COMMERCIAL	RETAIL	0.24	4,350	0	0	0	0	0	0	0	0
W49	1,405	COMMERCIAL	RETAIL	0.24	4,350	0	0	0	0	0	0	0	0
W50	1,405	COMMERCIAL	RETAIL	0.24	4,350	0	0	0	0	0	0	0	0
W51	1,405	COMMERCIAL	RETAIL	0.24	4,350	0	0	0	0	0	0	0	0
W52	1,405	COMMERCIAL	RETAIL	0.24	4,350	0	0	0	0	0	0	0	0
W53	1,405	COMMERCIAL	RETAIL	0.24	4,350	0	0	0	0	0	0	0	0
W54	1,405	COMMERCIAL	RETAIL	0.24	4,350	0	0	0	0	0	0	0	0
W55	1,405	COMMERCIAL	RETAIL	0.24	4,350	0	0	0	0	0	0	0	0
W56	1,405	COMMERCIAL	RETAIL	0.24	4,350	0	0	0	0	0	0	0	0
W57	1,405	COMMERCIAL	RETAIL	0.24	4,350	0	0	0	0	0	0	0	0
W58	1,405	COMMERCIAL	RETAIL	0.24	4,350	0	0	0	0	0	0	0	0
W59	1,405	COMMERCIAL	RETAIL	0.24	4,350	0	0	0	0	0	0	0	0
W60	1,405	COMMERCIAL	RETAIL	0.24	4,350	0	0	0	0	0	0	0	0
W61	1,405	COMMERCIAL	RETAIL	0.24	4,350	0	0	0	0	0	0	0	0
W62	1,405	COMMERCIAL	RETAIL	0.24	4,350	0	0	0	0	0	0	0	0
W63	1,405	COMMERCIAL	RETAIL	0.24	4,350	0	0	0	0	0	0	0	0
W64	1,405	COMMERCIAL	RETAIL	0.24	4,350	0	0	0	0	0	0	0	0
W65	1,405	COMMERCIAL	RETAIL	0.24	4,350	0	0	0	0	0	0	0	0
W66	1,405	COMMERCIAL	RETAIL	0.24	4,350	0	0	0	0	0	0	0	0
W67	1,405	COMMERCIAL	RETAIL	0.24	4,350	0	0	0	0	0	0	0	0
W68	1,405	COMMERCIAL	RETAIL	0.24	4,350	0	0	0	0	0	0	0	0
W69	1,405	COMMERCIAL	RETAIL	0.24	4,350	0	0	0	0	0	0	0	0
W70	1,405	COMMERCIAL	RETAIL	0.24	4,350	0	0	0	0	0	0	0	0
W71	1,405	COMMERCIAL	RETAIL	0.24	4,350	0	0	0	0	0	0	0	0
W72	1,405	COMMERCIAL	RETAIL	0.24	4,350	0	0	0	0	0	0	0	0
W73	1,405	COMMERCIAL	RETAIL	0.24	4,350	0	0	0	0	0	0	0	0
W74	1,405	COMMERCIAL	RETAIL	0.24	4,350	0	0	0	0	0	0	0	0
W75	1,405	COMMERCIAL	RETAIL	0.24	4,350	0	0	0	0	0	0	0	0
W76	1,405	COMMERCIAL	RETAIL	0.24	4,350	0	0	0	0	0	0	0	0
W77	1,405	COMMERCIAL	RETAIL	0.24	4,350	0	0	0	0	0	0	0	0
W78	1,405	COMMERCIAL	RETAIL	0.24	4,350	0	0	0	0	0	0	0	0
W79	1,405	COMMERCIAL	RETAIL	0.24	4,350	0	0	0	0	0	0	0	0
W80	1,405	COMMERCIAL	RETAIL	0.24	4,350	0	0	0	0	0	0	0	0
W81	1,405	COMMERCIAL	RETAIL	0.24	4,350	0	0	0	0	0	0	0	0
W82	1,405	COMMERCIAL	RETAIL	0.24	4,350	0	0	0	0	0	0	0	0
W83	1,405	COMMERCIAL	RETAIL	0.24	4,350	0	0	0	0	0	0	0	0
W84	1,405	COMMERCIAL	RETAIL	0.24	4,350	0	0	0	0	0	0	0	0
W85	1,405	COMMERCIAL	RETAIL	0.24	4,350	0	0	0	0	0	0	0	0
W86	1,405	COMMERCIAL	RETAIL	0.24	4,350	0	0	0	0	0	0	0	0
W87	1,405	COMMERCIAL	RETAIL	0.24	4,350	0	0	0	0	0	0	0	0
W88	1,405	COMMERCIAL	RETAIL	0.24	4,350	0	0	0	0	0	0	0	0
W89	1,405	COMMERCIAL	RETAIL	0.24	4,350	0	0	0	0	0	0	0	0
W90	1,405	COMMERCIAL	RETAIL	0.24	4,350	0	0	0	0	0	0	0	0
W91	1,405	COMMERCIAL	RETAIL	0.24	4,350	0	0	0	0	0	0	0	0
W92	1,405	COMMERCIAL	RETAIL	0.24	4,350	0	0	0	0	0	0	0	0
W93	1,405	COMMERCIAL	RETAIL	0.24	4,350	0	0	0	0	0	0	0	0
W94	1,405	COMMERCIAL	RETAIL	0.24	4,350	0	0	0	0	0	0	0	0
W95	1,405	COMMERCIAL	RETAIL	0.24	4,350	0	0	0	0	0	0	0	0
W96	1,405	COMMERCIAL	RETAIL	0.24	4,350	0	0	0	0	0	0	0	0
W97	1,405	COMMERCIAL	RETAIL	0.24	4,350	0	0	0	0	0	0	0	0
W98	1,405	COMMERCIAL	RETAIL	0.24	4,350	0	0	0	0	0	0	0	0
W99	1,405	COMMERCIAL	RETAIL	0.24	4,350	0	0	0	0	0	0	0	0
W100	1,405	COMMERCIAL	RETAIL	0.24	4,350	0	0	0	0	0	0	0	0

Note: Mall Areas and GFA to be provided by others



- IN LINE STORES
- ANCHOR MINI-ANCHOR
- SUPERMARKET
- CLUB
- EXHIBITION CENTER
- PRAYER HALLS
- TECHNICAL AREA
- HOTEL ROOM
- STORAGE
- DRIVERS ACCOMMODATION QUARTER
- ENTERTAINMENT
- FOOD & BEVERAGE
- FITNESS CENTER
- OFFICE/WORK
- HOTEL
- PUBLIC CIRCULATION
- SERVICE
- PARKING
- LOGISTICS/WAREHOUSE
- HOTEL POOL









# **T S P**

Collaboration and Work for RDLP.MX

**Client:**  
Martel Conceptos Inmobiliarios

**Name:**  
Torre San Pedro

**Typology:**  
Workspace

**Location:**  
Nuevo Leon, Mex

**Year:**  
2013-2014

**Status:**  
Finished

**Consultants:**  
-

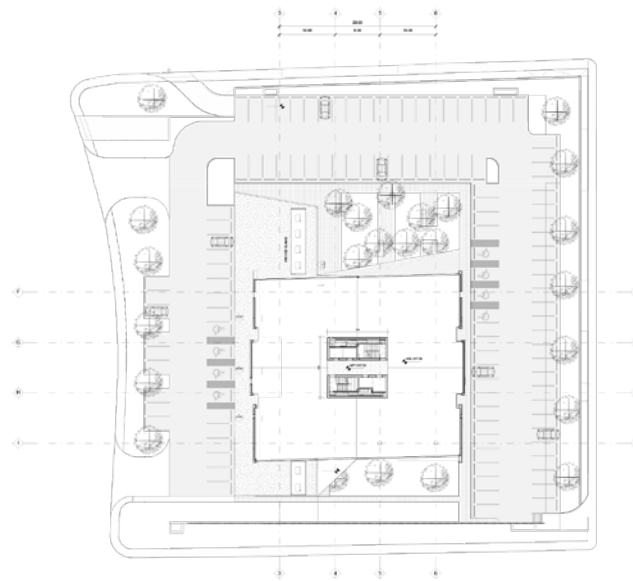
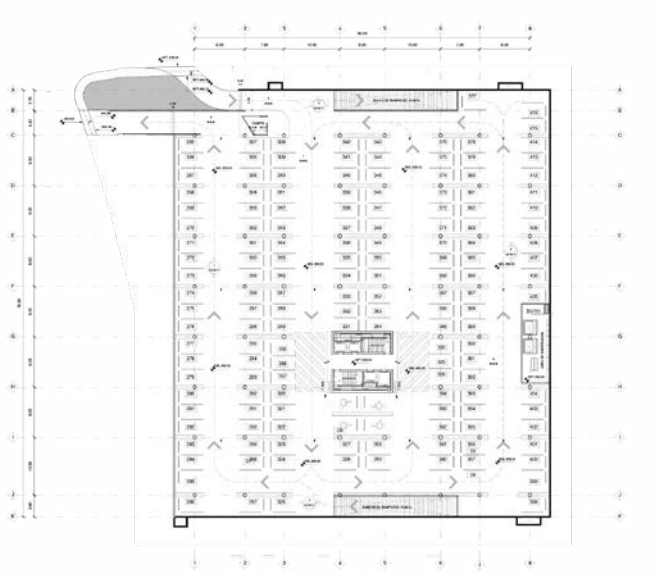
**Professional contributions:**  
Design Architect from Concept  
through Delivery Stage.  
Design Development  
Construction Documentation





# TORRE SAN PEDRO - NUEVO LEON, MEXICO

## DESCRIPTION / DRAWINGS

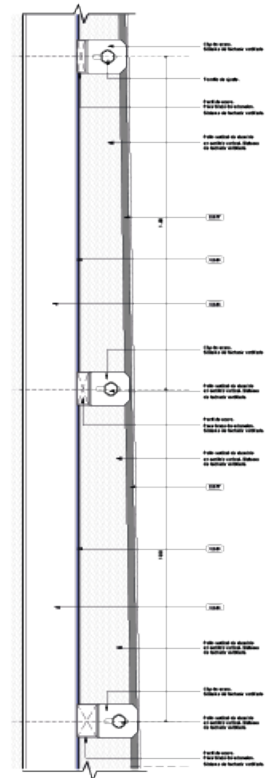
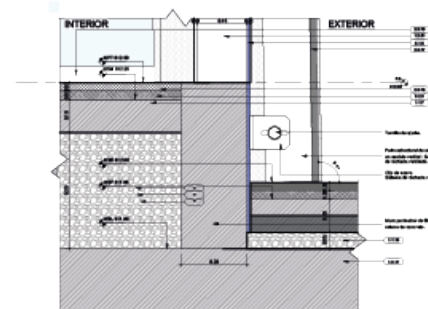
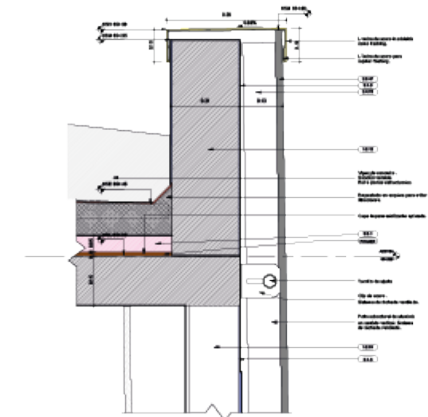
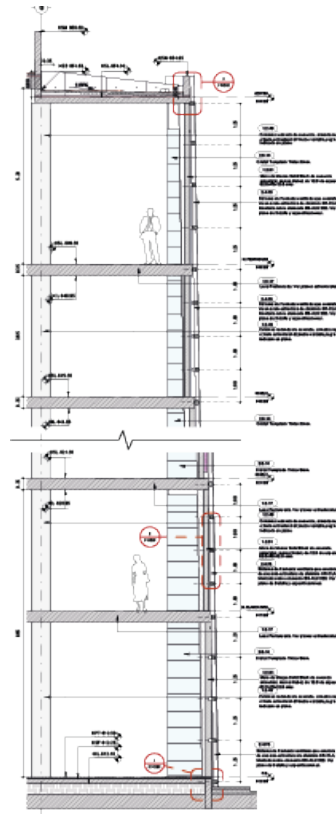
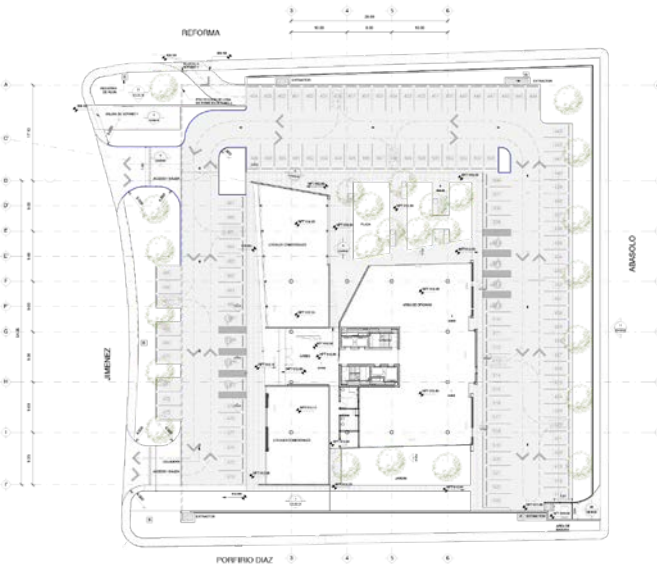


### Project Involvement:

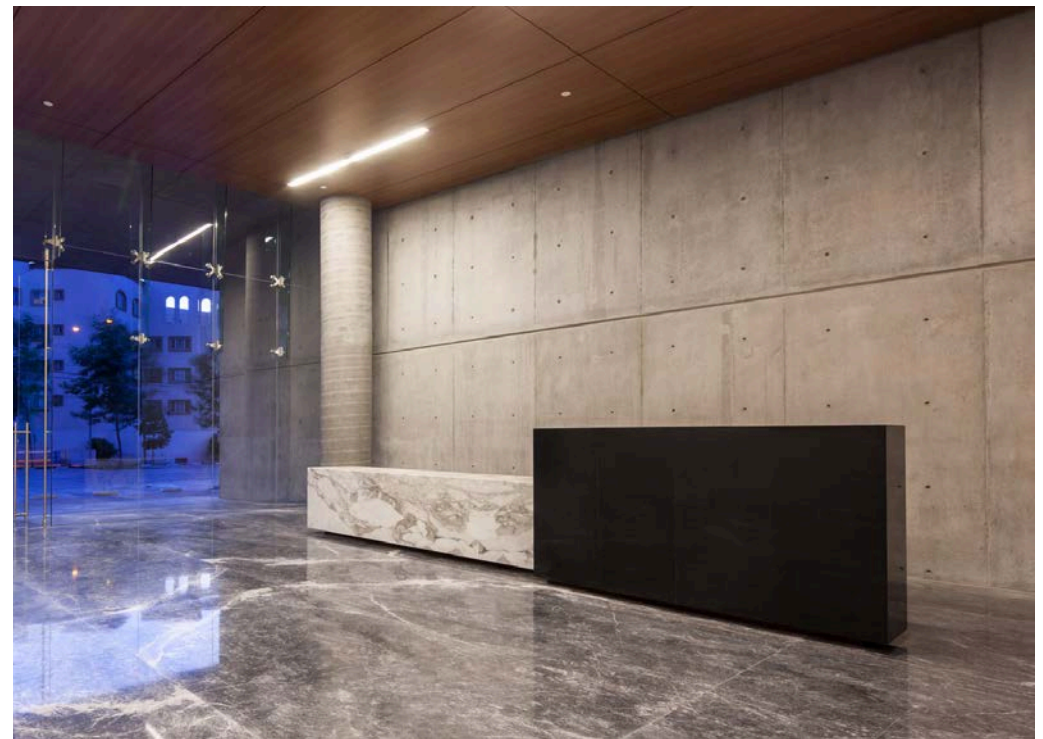
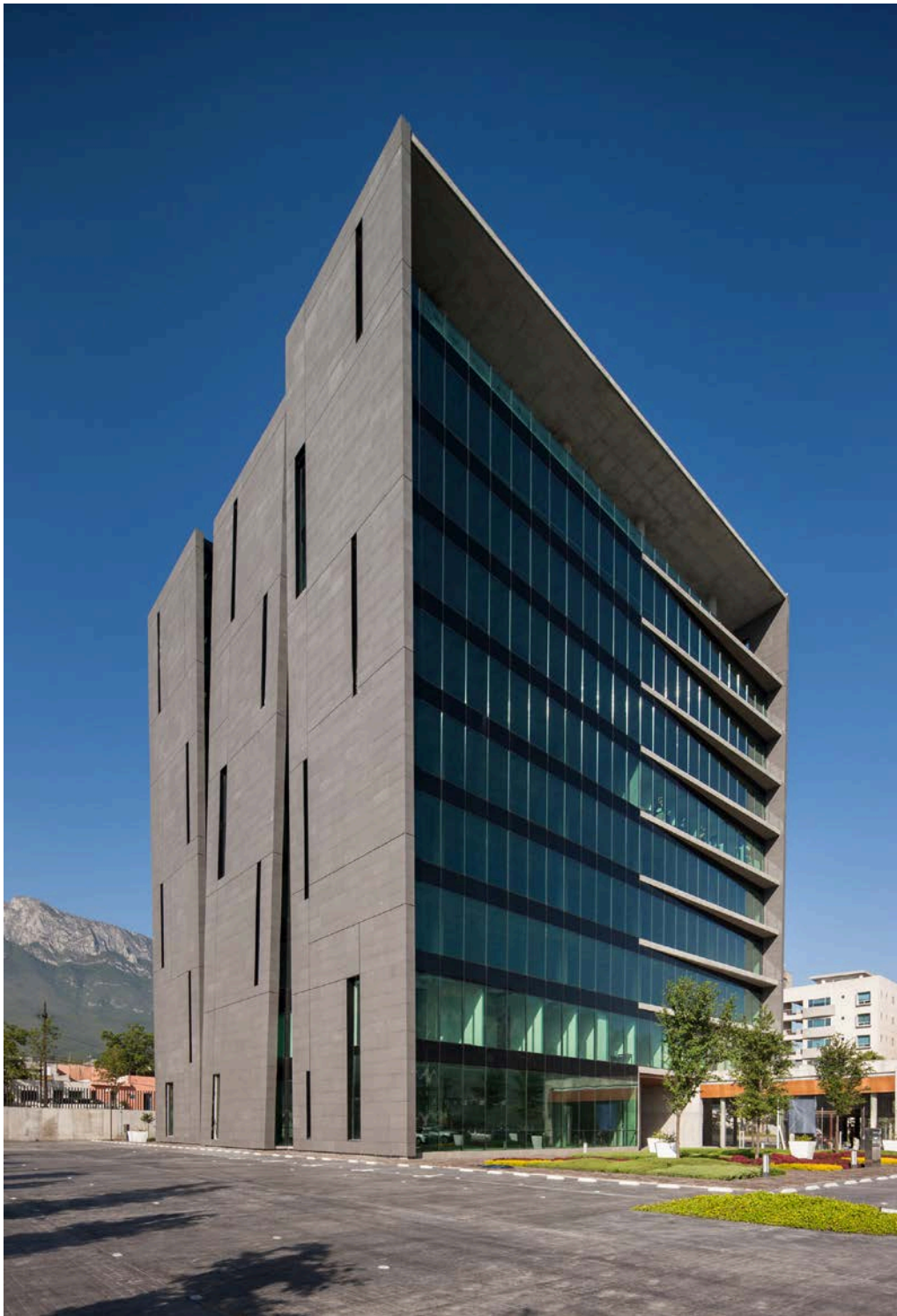
- Design Team Leader
- Concept development
- Schematic development
- Design Development
- Construction Documents
- Coordinate Consultants
- Coordinate Contractors

### Skills applied:

- Microsoft Project
- Microsoft Excel
- Autodesk Revit
- Autodesk AutoCAD



**TORRE SAN PEDRO - NUEVO LEON, MEXICO**  
ARCHITECTURE



# **PERSONAL** **PROJECTS**

**(That I like to talk about)**





## Maria Vogel

The second runway Maria Vogel emerges as a pretext to join the world of fashion with art. This fashion show is a replica of parts contextualized study of American artist Bruce Nauman.



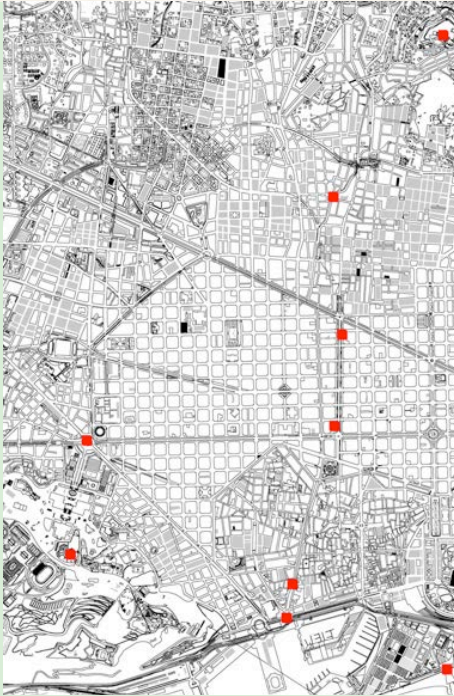


**FilmoTeca**  
de Catalunya

**FilmoTeca**  
de Catalunya

**FilmoTeca**  
de Catalunya

**FilmoTeca**  
de Catalunya



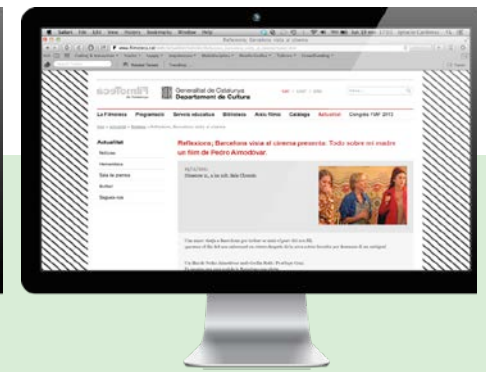
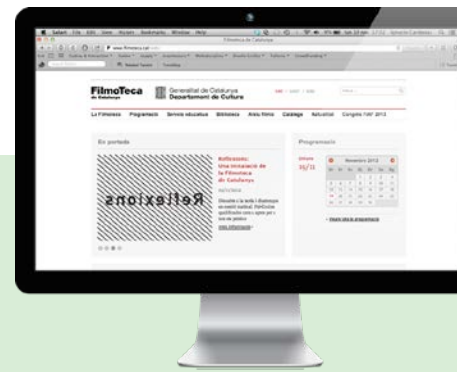
## **REFLEXIONS - CAMPAIGN**

Reflexions is a positioning project for the Film Archive of Barcelona.

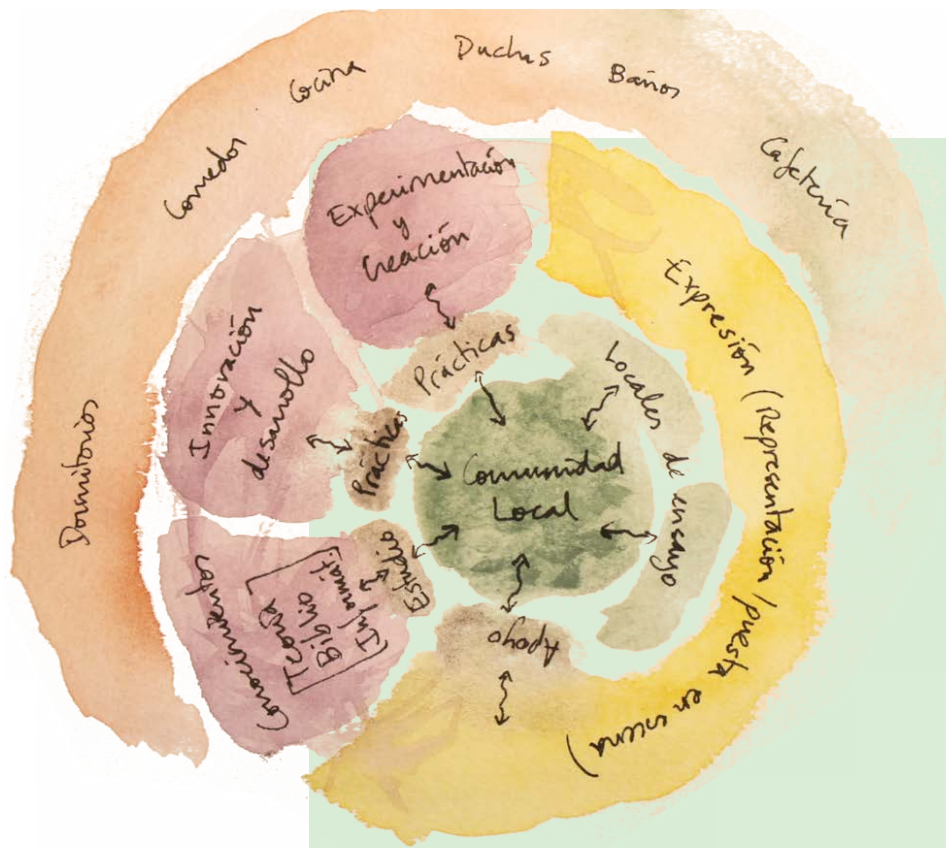
A canonical building suffering from rejection by the neighbourhood where it is located, Reflexions aims to increase the sense of belonging between these two parties, and also announces a film series designed to show the neighbourhood and the Catalans, the different perspectives for their city that exist in the cinema world.











## CALPONS COMMUNITY PROJECT

This development project tries to solve a real problematic for abandonment of a village on the outskirts of Barcelona. A people who despite their long industrial history recessions have pushed to the brink of extinction.

The project proposes to develop a program for the arts, where each of the seven communities in the area housed in public buildings and residential summer schools for international artists. The architectural solution is clean, and only attempts to reuse abandoned structures, appropriating an architectural program spaces.

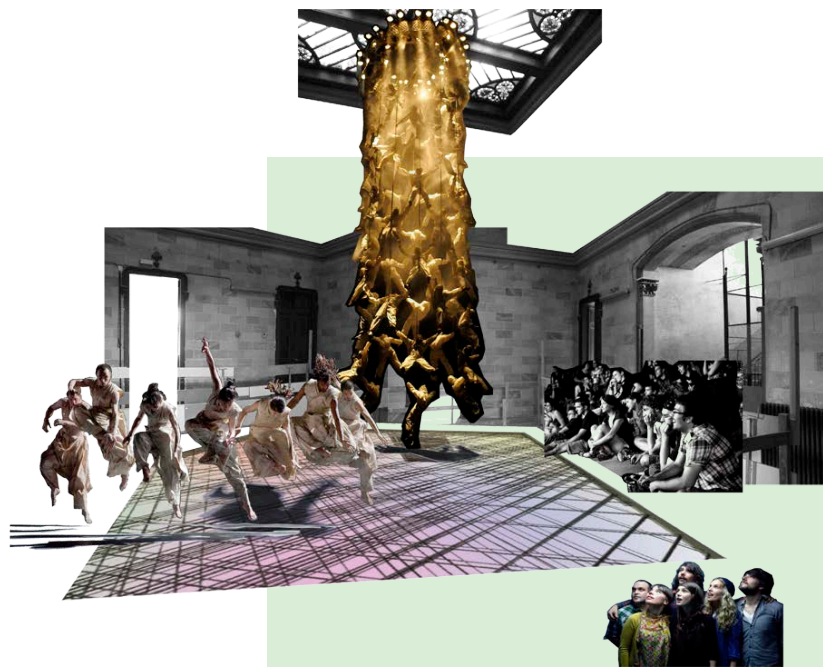
The communication of this project had to be effective in order to old people and in turn should evoke the arts, that's why we solve right through collages that mix, actual photos of the place with ideas taken from magazines.













# BEST REGARDS



## **DATA.**

José Ignacio Cárdenas Canales  
nationality Mexican  
birth\_date November 29, 1984  
mail ignacio@estudiolacra.com  
current\_location LONDON, UK  
cellphone +44 7388093374